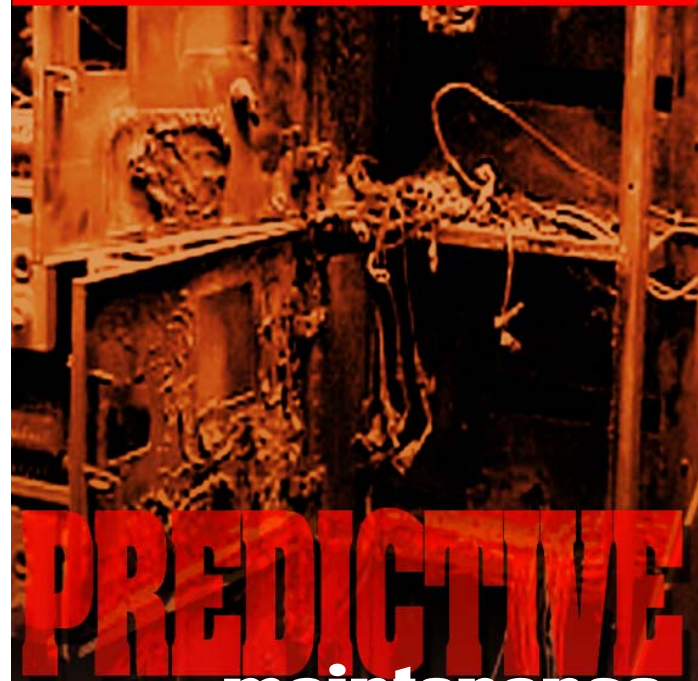


MOTORS TRANSFORMERS PUMPS
SWITCHGEAR FANS CONTROLS



PREDICTIVE maintenance services

**Improved
maintenance,
reliability,
safety, and
substantial
savings.**

LONGO
Since 1945

LONGO

1 Harry Shupe Blvd., Wharton, NJ 07885



**Solutions to reduce costly
equipment repair and replacement**



Defining Predictive Maintenance

Predictive Maintenance gives you an ongoing view of your equipment as it changes and wears.

- PdM finds nagging areas of inefficiency
- PdM reduces the cost of maintenance scheduling and performance
- PdM identifies low cost repairs instead of high cost replacement
- PdM prevents severe equipment emergencies and the cost of lost production

PdM is a short term investment that can save you substantial amounts over the long term.

LONGO
1 Harry Shupe Blvd., Wharton, NJ 07885

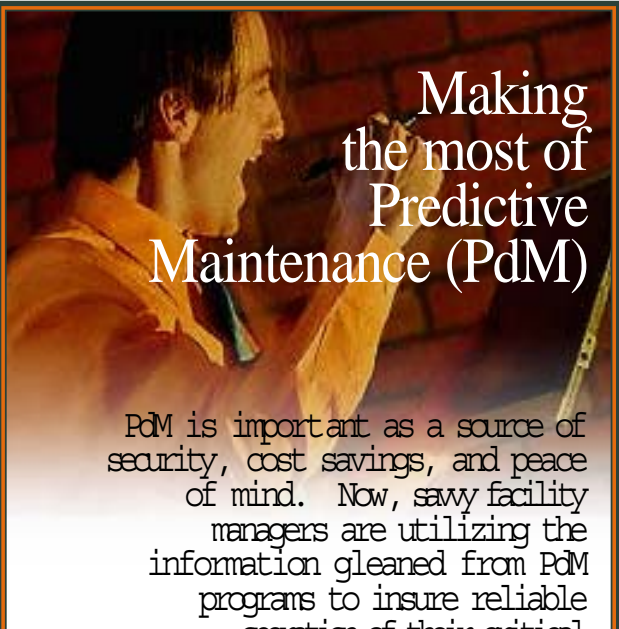
973-537-0400 / info@elongo.com

Other locations:

New York City: 212-929-7128 / Linden, NJ: 908-925-2900

© LONGO 2004

PRESORTED
STANDARD
U.S. POSTAGE
PAID
SUMMIT
PERMIT NO. 8



Making the most of Predictive Maintenance (PdM)

PdM is important as a source of security, cost savings, and peace of mind. Now, savvy facility managers are utilizing the information gleaned from PdM programs to insure reliable operation of their critical

Our state-of-the-art equipment and certified technicians make Longo PdM a source for more than simple maintenance or disaster prevention. Here are just two examples of PdM data being applied to cost saving situations:

-Equipment Warranty.

A thorough survey and examination of newly installed equipment can determine if the unit(s) are actually performing up to the parameters established by the manufacturer. This upfront examination can also provide critical information when warranty claims arise.

-Assurance.

The use of professionals to conduct PdM surveys reduces the potential for a host of issues from nagging maintenance problems to large disasters. Early detection keeps repair costs low. Insurance companies are becoming more aware of the value of PdM programs and the impact they have on your insured equipment. A discussion with your insurance provider could be rewarding.

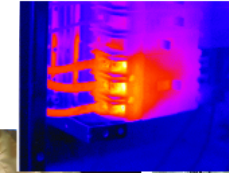
SMALL UNDETECTED PROBLEMS DON'T GO AWAY, DON'T CURE THEMSELVES, AND ALWAYS END UP COSTING YOU MORE IN THE LONG RUN.

Longo has developed a range of condition monitoring services that provide you with accurate information on the status of critical equipment. These services are often combined into periodic intervals to determine changes and even project time to failure. Unless the situations are severe, most problems are silent and invisible to normal activity.

INFRARED/THERMOGRAPHY

A simple non-invasive technique using heat detection provides a picture of your equipment's health.

- Shorted wires, poor connections, etc. are easily detected and interpreted. Electrical problems are one of the leading causes of serious fire damage.
- Friction from wear or misalignment will also generate telltale thermal images.



Level of Severity		
Minor	Medium	Major
Temperature Range: 100-150°F	Temperature Range: 150-200°F	Temperature Range: 200-250°F
Color: Yellow	Color: Orange	Color: Red

INFRARED WINDOWS

When power transmission equipment is inaccessible due to safety concerns, opening cabinets to scan equipment on a timely basis becomes almost impossible.

- Infrared windows allow imaging without removing or opening cabinets
- This is a small investment considering the potential for severe problems.



VIM: VIBRATION INFORMATION MANAGEMENT

Smooth power transmission is essential to longevity and sustained production. Vibration is wasted mechanical energy.

- Vibration analysis will pinpoint problems in suspect equipment
- A vibration condition monitoring program finds potential problems.
- Remedying small vibration problems can eliminate damage to related components

OIL ANALYSIS

The analysis of lubricants for contaminants and metals can reveal early trouble signs by determining the wear condition of the lubricated parts and/or assembly.

- Periodic oil testing combined with vibration condition monitoring will expose any trend of deterioration and the need for repairs.
- Repairs can be dealt with while the problems are small, avoiding major equipment damage and substantial replacement

AIRBORNE ULTRASOUND

Electrical and mechanical elements give off sound waves that signal the condition of your equipment. Some purr, some growl and some even scream.

- Ultrasound reads and interprets these signals, and hears where potential problems exist.



Service through Knowledge®

- Ultrasound does not require opening panels or shutting down machinery.