

**REVISED
SCHEDULE**

The LONGO
PROFESSIONAL **seminar** SERIES
will resume after the summer with
Advanced Equipment Management,
Predictive/Preventive Maintenance,
Switchgear, etc.

Watch for our new schedule.

Re-bowling...

**Is your vertical turbine
pump still performing?**

**If not...
you have a choice.**

1. Replace your pump
2. Disassemble the pump and repair it
3. Let Longo Re-bowl it.

-Keep the same discharge head
-Restore or upgrade the hydraulic performance
-Less expensive
-Quick turn around time



Result: A new pump!

Visit us at our website

Your resource for

**MOTORS DRIVES FANS SWITCHGEAR TRANSFORMERS
CIRCUIT BREAKERS PUMPS SEALS FIELD SERVICE
PREDICTIVE/PREVENTATIVE MAINTENANCE**

LONGO
973-537-0400

SPORTS TRIVIA

1. The New York Yankees were originally known as the...?
2. When did it become illegal for Olympic athletes to use drugs to enhance their performance during competition?
3. Whose career record for home runs did Babe Ruth break?
4. Who was the first rookie to receive the most votes by fans in the NBA's All-Star balloting?
5. What was the only team the 1988-89 Detroit Pistons did not beat on their way to their 63-19 record?

1. New York Highlanders because of their location on high ground. 2. 1967
3. Roger Connor 4. Grant Hill 5. NY
Knicks

*Over 50 years of
"Service Through
Knowledge"™*

- Wharton Corporate Center
Wharton, NJ 07885
(973) 537-0400
(973) 537-0404 Fax
Repair Services
(973) 537-0400 Press "1"
(973) 537-0420 Fax
Product Sales
(973) 537-0400 Press "1"
(973) 537-0410 Fax
Engineering Services
(973) 537-0400 Press "3"
(973) 537-0415 Fax
Field Services
(973) 537-0400 Press "4"
(973) 537-0415 Fax
- Linden Facility
Linden, NJ 07036
(908) 925-2900
(908) 925-9427 Fax
- New York Facility
NY, NY 10011
(212) 929-7128
(212) 633-9534 Fax

• **WebSite**

www.eLONGO.com

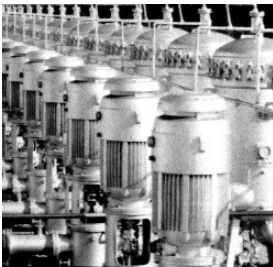
• **E-Mail**

info@eLONGO.com

**"WE ADDRESS
THE CAUSE
AS WELL AS
THE EFFECT."®**

Pump Resources

As the scope of our pump service expands, so has the number of contacts and suppliers for pumps, seals and parts. As with our superior motor work, we have selected those companies that complement Longo's quest for quality. While all our support companies have exhibited overall pump expertise, each has its own perspective and methods to assist Longo in resolving any pump problems that arise.

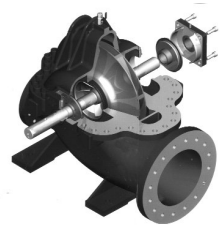


FLOWAY PUMPS

Longo has the advantage of including Weir Floway Pumps as one of our dedicated partners. The Floway Pumps will enable us to provide more specialized and sophisticated pumps to the power and renewable energy industries and similar fields.

With 70 years in the industry, Floway is experienced in all facets of pump applications from nuclear to hydro. This experience, coupled with extraordinary resources, has enabled Floway to develop and produce products for the most demanding applications.

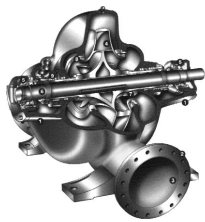
Floway's product line for the water industry is built around the versatility of the vertical pump design. Depending on exact job specifications, Floway engineers select the best combination of pump components and materials to meet virtually any fluid-moving requirement.



WEIR CLEAR LIQUID

The Unigilde E, Single Stage Axially Split Casting pumps have been developed by Weir Clear Liquid Division following an extensive consultation of major users. This has produced an advanced pump which will provide total reliability and reduced whole life costs. The range has been designed for a wide variety of applications and industries and is guaranteed to provide the end user with optimum value for money. **Benefits:**

- **Lower Energy Costs** Weir efficiency coating on casing optimizes performance and prolongs efficiency
- **Increased Component Life** Stainless Steel impeller offers better corrosion protection and optimum lifetime operation
- **Reduced Maintenance/Reduced Downtime** Cartridge bearings and seals can be changed without removing the top half casing and in a fraction of the time taken on conventional axial split pumps
- **Flexible Installation** Options - Horizontal, Vertical Open and Vertical Close Coupled



RUHRPUMPEN

Ruhrpumpen has over 50 years of worldwide experience, emphasizing innovation and reliability. Constant research and development ensure Ruhrpumpen products are current with all contemporary conditions and applications.

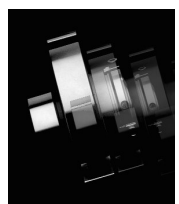
Production is as sophisticated as the development, utilizing CNC machinery, control and inspection procedures. ISO 9001 Certified facilities are indicative of Ruhrpumpen's high standards. Featured is their Horizontal Split Case pump, which is an example of their worldwide technical expertise and production.



ROBOT

ROBOT, a division of ITT, has been designing and building pumps in Europe for the last half century. Now available in the USA, Robot Vortex submersible Pumps are the answer to an annoying and expensive problem: Long Shaft Sewer Ejection Pumps.

These tough, long lasting pumps are designed to deal with clogs, large solids and heavy sludge, corrosion and reduce frequent maintenance. The vortex design leaves a wide passage through the volute in which a strong vortex is created. The simplicity of the design and engineering keep the pump trouble free. Robots simple Guiderail System makes installation and removal much less labor intensive. Substantial cost savings, up to 60%, are possible when you replace your long shaft ejection pumps with Robot vortex submersible pumps.



BURGMANN

Longo is pleased to announce Burgmann as a new source for mechanical seals. Burgmann can supply units for repair, upgrades and rebuilding of all popular, and many not so popular brands and types of seals. As early as 1990, Burgmann became the first seal manufacturer to be certified to ISO 9001. Burgmann products guarantee the very highest standards of safety and reliability and are used in virtually all industrial sectors. High quality and environmentally friendly solutions are the absolute priority at Burgmann. If you have questions about how mechanical seals work and perform, Longo can provide you with specific information for your particular situation.